

RESOLUTION NO. 07-67

**RESOLUTION AMENDING RURAL SPECIAL IMPROVEMENT MAINTENANCE
DISTRICT KNOWN AS R.S.I.D. #767M
EMERALD FOREST SUBDIVISION-DRY HYDRANT**

WHEREAS, the Board of County Commissioners of Yellowstone County, Montana, have been presented with a valid petition to create a Rural Special Improvement Maintenance District which shall be known as R.S.I.D. #767M for Emerald Forest Subdivision- Dry Hydrant described in Exhibit A as lot 1, block 1 and block 2, lots 1-4 of Emerald Forest Subdivision, and more particularly shown in Exhibit B (map) and,

WHEREAS, under MCA 7-12-2102(2), a petition was presented to create a rural special improvement district that contains the consent of all (100%) of the owners of property to be included in the district;

WHEREAS, the Board of County Commissioners finds, determines and declares that:

1. The public interest or convenience requires the creation of a Rural Special Improvement Maintenance District as hereinafter described;
2. The costs of providing maintenance shall be borne by owners of the property included within the boundaries of the Rural Special Improvement Maintenance District with all existing and future lots being assessed an equal amount on a per lot basis (Exhibit D);
3. The purpose of forming the District is to provide for fire hydrant tank maintenance located within the boundaries of this District;
4. The Commissioners have been presented with a valid Petition to create the proposed District;

NOW, THEREFORE, BE IT RESOLVED by the Board of County Commissioners of Yellowstone County as follows:

1. The Commissioners have acquired jurisdiction to create a Rural Special Maintenance District No. 767M to provide for fire hydrant tank maintenance. See exhibit C for annual maintenance costs.

2. All of the costs of the District shall be assessed equally on a per lot basis for all existing and future lots (see Exhibit D). The boundaries of this District are shown on the map attached as Exhibit B and described in Exhibit A.

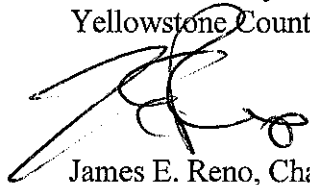
3. The number of the Rural Special Maintenance District thereof shall be No. 767M.

4. All lots will benefit from proposed R.S.I.D. The total cost of the maintenance will be assessed on a per lot basis.

PASSED AND ADOPTED by the Board of County Commissioners of Yellowstone County, Montana, this 31st day of July, 2007.

Board of County Commissioners
Yellowstone County, Montana

(SEAL)

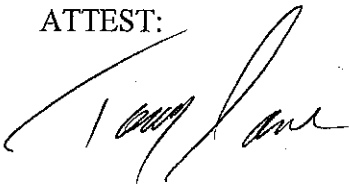


James E. Reno, Chair

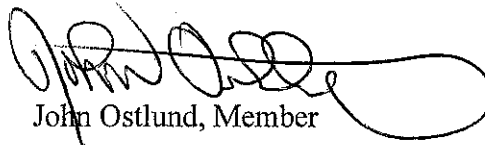


Bill Kennedy, Member

ATTEST:



Tony Nave
Clerk and Recorder



John Ostlund, Member

EXHIBIT A

PETITION TO ESTABLISH A RURAL SPECIAL IMPROVEMENT DISTRICT (RSID)

SECTION B

LEGAL DESCRIPTIONS AND OWNERSHIP REPORTS (ATTACHED)

Emerald Forest Subdivision – All lots within subdivision

D06521A Scott, Harris

① Block 1, lot 1

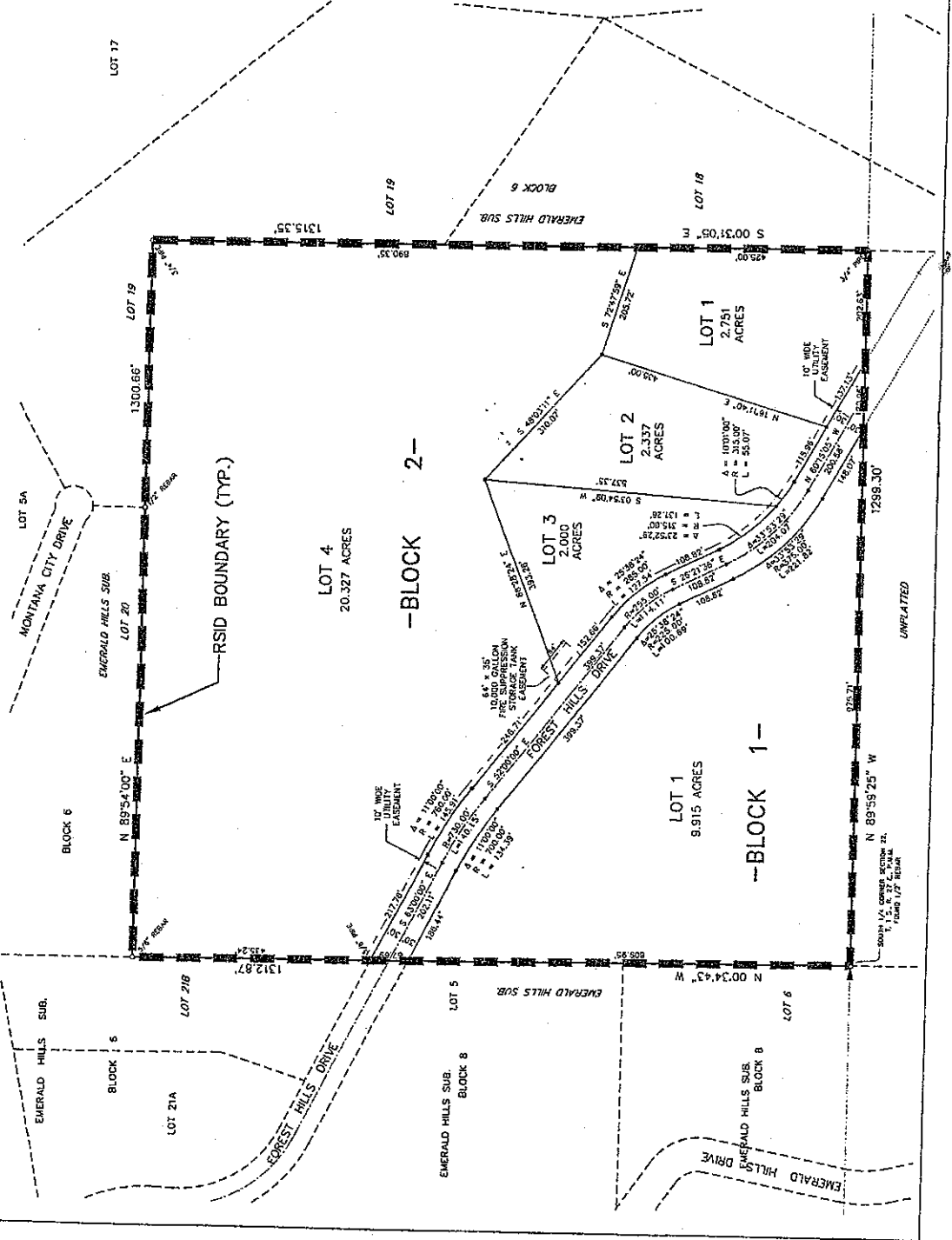
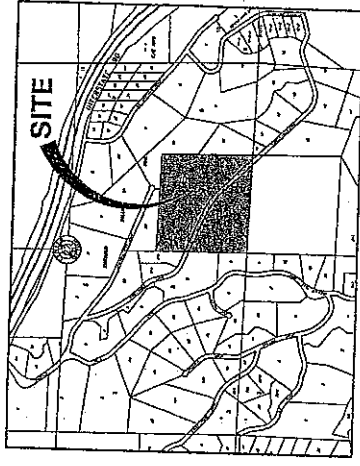
② Block 2, Lots 1-4

EXHIBIT B

BOUNDARY EXHIBIT OF RURAL SPECIAL IMPROVEMENT DISTRICT FOR MAINTENANCE (RSID-M) FOR
EMERALD FOREST SUBDIVISION
 BEING TRACTS 1 AND 2 OF CERTIFICATE OF SURVEY No. 3298
 SITUATED IN THE SOUTHEAST 1/4 OF SECTION 22, T. 1 N., R. 27 E., P.M.M.
 YELLOWSTONE COUNTY, MONTANA

PREPARED FOR : SCOTT HARRIS
 PREPARED BY : ENGINEERING, INC.
 SCALE : 1" = 200'

JUNE, 2007
 BILLINGS, MONTANA



From Plat No. 06048.01
 4/2/07

EXHIBIT C

PETITION TO ESTABLISH A RURAL SPECIAL IMPROVEMENT DISTRICT

SECTION C ESTIMATED ANNUAL MAINTENANCE COST

FIRE PROTECTION FACILITIES:

	MAINTENANCE ACTIVITY	ESTIMATED ANNUAL COST
1	MAINTAIN DRY HYDRANT STRUCTURE, WATER LEVEL, AND GRAVEL TURNOUT	\$200.00

SUBTOTAL =

\$200.00

TOTAL ESTIMATED ANNUAL MAINTENANCE COST = \$200.00
TOTAL NUMBER OF ASSESSMENT UNITS (# OF LOTS) = 5
ESTIMATED ANNUAL MAINTENANCE COST PER LOT = \$40.00
ESTIMATED MONTHLY MAINTENANCE COST PER LOT = \$3.33

NOTE:

ESTIMATED ANNUAL MAINTENANCE COSTS HAVE BEEN PROVIDED FOR THE PURPOSE OF ESTABLISHING A MAINTENANCE AND OPERATION BUDGET FOR THE PUBLIC SUBDIVISION FACILITIES. ANNUAL ASSESSMENTS MAY NEED TO BE ADJUSTED UP OR DOWN BY THE RSID-M AD-HOC COMMITTEE IN THE FUTURE, BASED ON ACTUAL COSTS INCURRED TO MAINTAIN AND OPERATE SUBDIVISION FACILITIES.

